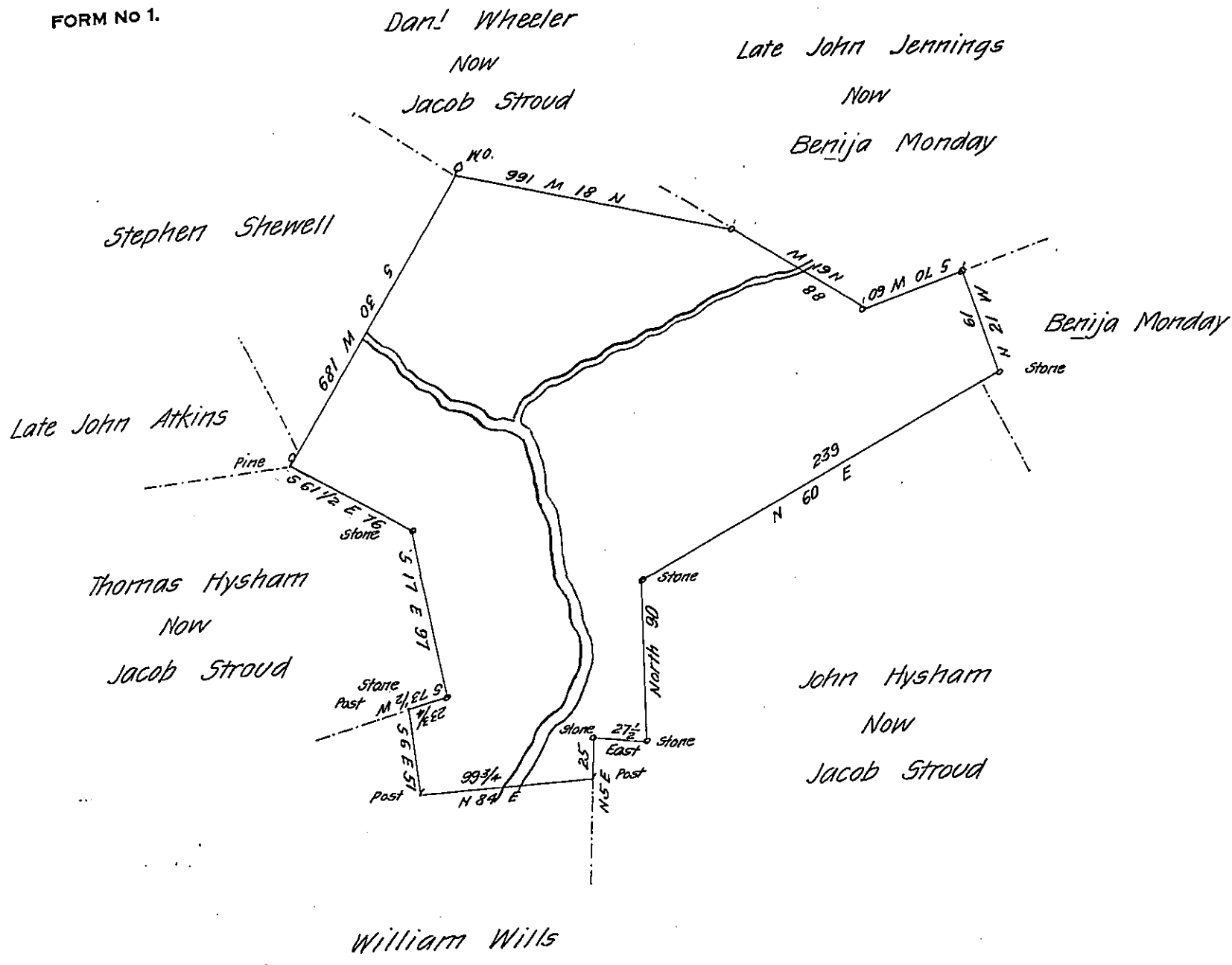


FORM NO 1.



By virtue of a Warrant dated the 20 August 1787 Surveyed the 15  
 December 1787 to Elizabeth Wills the above described tract of land Situate on  
 Marshall's Creek in Lower Smithfield Township Northampton County Containing  
 four hundred and thirty two Acres three Quarters and the allowance of 6 P. Cent

P.-

Geo. Palmer D.S.

To Daniel Brodhead Esq<sup>r</sup>  
 Surveyor General

Claim'd by the Heirs of Geo. Taylor & Lewis Gordon.

IN TESTIMONY that the above is a copy of the original remaining on file in  
 the Department of Internal Affairs of Pennsylvania, made  
 conformably to an Act of Assembly approved the 16th day of  
 February, 1833, I have hereunto set my Hand and caused  
 the Seal of said Department to be affixed at Harrisburg,  
 this twenty first day of June 1907

*Henry Houck*  
 Secretary of Internal Affairs.